



The purpose of the **PETKUS De-Awner SE 03** is the processing of brewing barley, cereals and forage seed.

The De-Awner is used specifically for:

- De-awning barley
- De-husking wheat
- Clipping oats
- Separating seed clusters
- Polishing seed

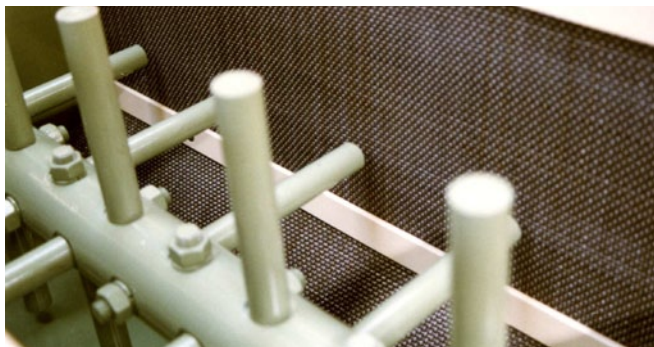
#### Advantages:

- Robust and wear-resistant construction
- Adjustable processing intensity

#### Description:

The product is transported into the machine through the inlet. The agitator shaft with the pin beaters removes awns, clippings, and beards from the product. The product flows out of the De-Awner through the adjustable bottom slide of the outlet.

The processing intensity can be adjusted by the speed (two stages) and the adjustable bottom slide.



De-Awner with exchangeable wear plates

#### Construction:

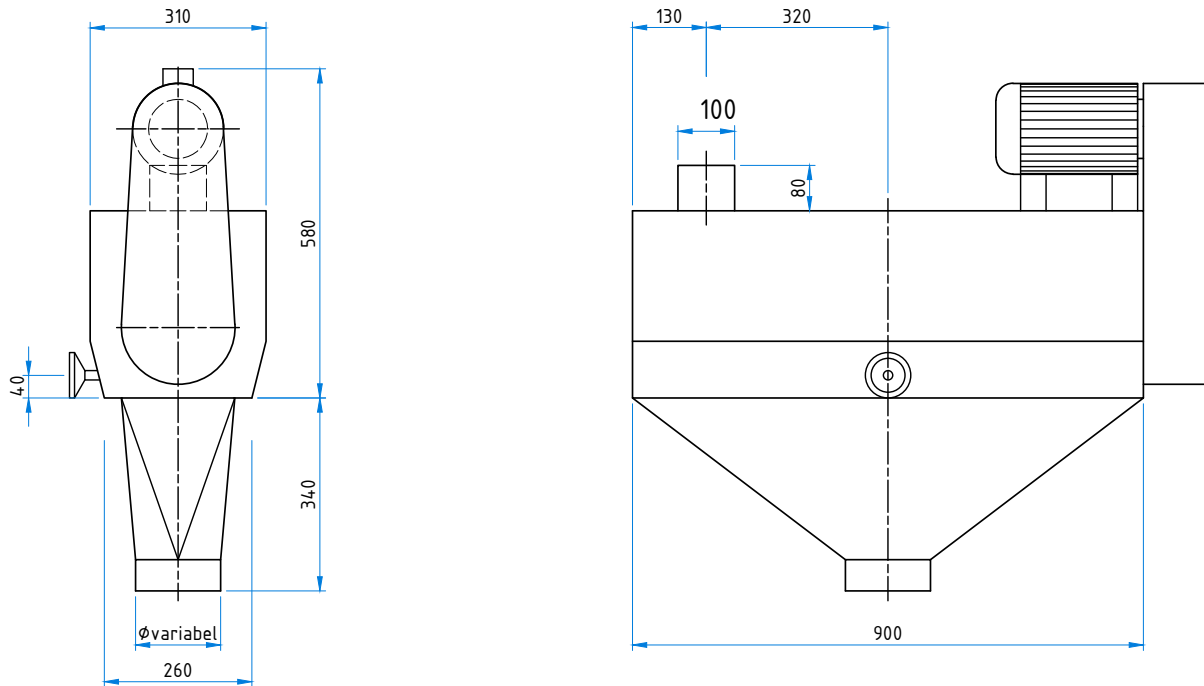
The De-Awner is equipped with a sheet steel housing with the agitator shaft and the pin beaters. The inlet is on the top of the machine. The outlet with the adjustable slide is under the machine. The machine is operated by a V-belt system with an electric motor driving the agitator shaft.

#### Standard Equipment:

- Bolted frame made of sheet steel
- Agitator shaft with round pin beaters
- Drive unit with electric motor

#### Options:

- Lining of the interior with indented cells



Technical Data		SE 03
Seed	bu/hr	100
Barley for breweries	bu/hr	100 - 180
Electrical power	hp	3.0
Speed of the shaft	rpm	850 / 1 050
Weight	lb	308.6
Dimension		
Length	in	45.5
Width with motor	in	12.25
Width	in	12.25
Height	in	23

Technical alteration reserved.